

FOR IMMEDIATE RELEASE

## SHINTA INOUE: PAINTINGS

**Venue:** HRD Fine Art  
(494-1 Kamigoryo-tatemachi, Kamigyo-ku, Kyoto)  
**Date:** October 19 - December 14, 2024  
**Hours:** **Thu: 11:00am - 3:00pm**  
**Fri & Sat / December 8 (Sun): 11:00am - 7:00pm**  
**Closed:** Sun-Wed (available for viewing by appointment)  
**Opens on December 8 (Sun) 11:00am - 7:00pm**

**Opening reception: October 19th (Sat) 5:00pm-**

\* \* \* \* \*

HRD Fine Art is delighted to announce the opening of a solo exhibition of Shinta Inoue, on view from October 19th through December 14th, 2024. The show will be Inoue's first ever exhibition at the gallery.

Shinta Inoue was born in 1967 in Sakai, Osaka, and he graduated from the Visual Communication Design Course at Kyoto Seika University. Well-versed in music and dance, he started his artist career when still in the university, before going on a tour in Europe for several years as a member of a Wadaiko Japanese drums performance group. After coming back to Japan, he traveled to Europe once again, this time to Dusseldorf in Germany as part of the artist-dispatch program sponsored by Osaka Prefecture and stayed there as a resident artist.

Versatile and with an ever wider range of repertoire, he is most well-known for his lifework "Shepherd" project, which involves improvisationally and randomly displaying sheep-shaped panels in different landscapes. The past "Shepherd" projects have taken place in Germany, China, Inner-Mongolia, Bali, and many other places around the globe. His recent projects include stage designs for Japan's traditional Noh play, community art and hospital art initiatives that involve workshop-style co-creation activities.

This exhibition focuses on Inoue's paintings, which can be seen as his starting point in his vast and multi-dimensional art creations. Highlighting his unique painting technique using his bare fingers, we will showcase Inoue's paintings that depict fantastical, dream-like scenes imbued with rich narrative.

**[ ARTIST'S STATEMENT ]**

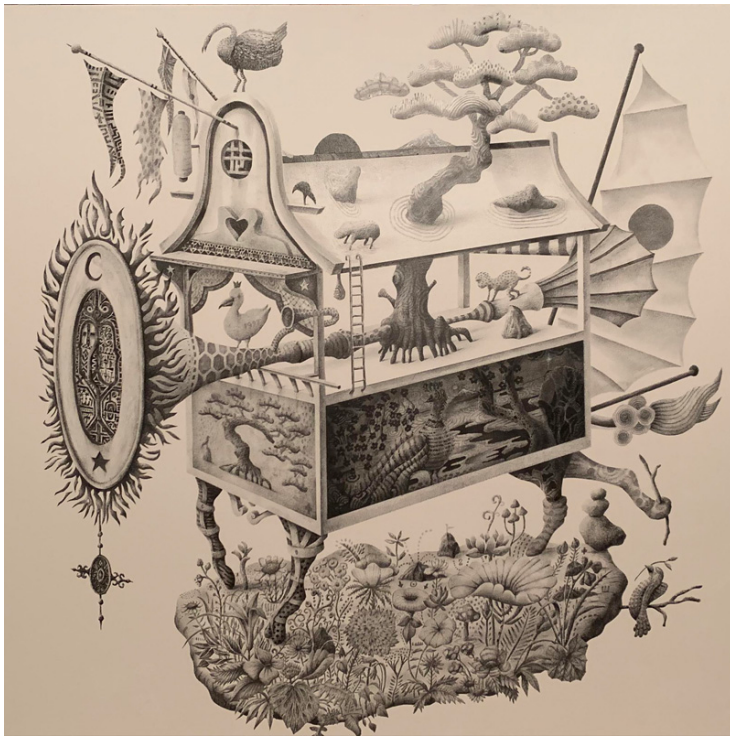
I will exhibit some of the paintings that I have been making for a very very long period of time.  
I was hospitalized due to a cerebral bleeding in the middle of the COVID-19 pandemic.  
I was one step short of death when something showed me a sign to live a bit longer.  
And now, I feel the joy of being allowed to live every single day.

The world beyond death attracts me.  
But it also feels good to draw as I get closer to death.  
It's beautiful - the process where everything starts from a blank white canvas and eventually it will  
cease to exist.

All my artworks in this exhibition have never been shown elsewhere before.  
They could have been my posthumous works.  
Please remember me as a weird artist who existed from 1967 to 2024, always immersing himself in the  
world of flat surface.

Shinta Inoue

[ ARTWORKS ]



*Grand Mobile Illustrated Book of Flora and Fauna of the World*  
mixed media on panel 90x90cm 2024



*Grand Illustrated Book of Birds and Birdhouses of the World*  
mixed media on panel 90x90cm 2024



*COVID-19 Zero Gravity Plant Mask*  
mixed media on panel 45x45cm 2024

## [ ARTIST'S BIOGRAPHY ]

### Shinta INOUE

1967 Born in Osaka  
 1991 BA in Visual Communication Design, Kyoto Seika University  
 Lives and works in Kyoto

### Selected Exhibitions / Art Projects

1999 "Shepherd Project 1999" Kirin Art Plaza, Osaka  
 2001 "Shepherd Project 2001" Inner Mongolia, China (Co-creation with Shinjiro Maeda)  
 2004 "art-life vol.3: Shinta Inoue & Naoko Inoue / Summer Vacation of Orange Sheep" Spiral, Tokyo  
 2005 "Safari Park Project" Showa Kinen Park, Tokyo  
 2007 "BALI-KYOTO PROJECT: Shepherd Project in Bali" Ubud, Indonesia  
 2009 "Shepherd Story in Shinjuku 2009" Shinjuku (Co-creation with Shinjiro Maeda)  
 2011 "Shepherd Project in Anting Old Street" Shanghai (Co-creation with Shinshikaku)  
 2012 "Shinjuku Creators Festa 2012" Tokyo  
 2022 "Sanriku Blue Line Project" Ofunato, Iwate  
 2023 "Nishinari Art Zoo Project" Osaka  
 "The Most Beautiful Footpath in the World" Shokaen Social Welfare Corporation, Kameoka  
 "Hospital Art Project: Friends of VIVID BIRD" Amagasaki Daimotsu Hospital, Amagasaki  
 "Hospital Art Project: Traveling Leaves and Birds of Hope" Osaka Women's and Children's Hospital, Osaka  
 "Shepherd Project in Yabu" Yabu, Hyogo  
 "Shepherd Project in Ikoma" Ikoma, Nara  
 2024 "World Sheep-nized Project" Sakai Municipal Higashi Cultural Center, Sakai  
 "Sanriku Blue Line Project" Ofunato, Iwate / Miyako, Iwate

### Performance / Stage Design / Art Direction / Workshop etc.

1992-94 Performed as member of the Japanese Drum Group "Wadaiko Ichiro" at more than 100 theaters throughout Europe  
 1997 Participated in the tour of the Japanese Drum Group "YAMATO" in Brazil as stage designer, lighting technician, and art director  
 2006 General director of "Safari Park Project in Ritto 2006" Ritto Art & Culture Hall SAKIRA  
 2008 Art director and stage director of "Able Art On Stage: Imaginary Dynamics Strolling Illustration Book" Shiga Medical Center for Children, Moriyama, Shiga  
 2010 Art director of "Dancing in Aoi Tower!!" Shizuoka City Museum of Art, Shizuoka  
 2013 Director of "Bird House Project 2013" Sofia, Bulgaria  
 2014 Art director of "MuDA Bulgaria-Croatia Tour 2014" Bulgaria / Croatia  
 2015 Stage director of the Noh play tour in Tohoku and Northern Kanto regions sponsored by the Agency for Cultural Affairs

- 2016 Art director of "Ne-net Spring/Summer Collection" Light Box Studio Aoyama, Tokyo
- 2016 Art director of the Noh play "Adachigahara" touring in Romania and Bulgaria
- 2017 Art director of "Sanriku International Arts Festival" Ofunato, Iwate et al.
- Art director of Yamamoto Noh Theater's tour in Nantes, France
- 2018 Stage director of Yamamoto Noh Theater's performance at Sibiu International Theatre Festival, Sibiu, Romania
- 2019 Stage director of a Noh play in Plovdiv, Bulgaria
- 2020 Stage director of the Noh play "MIZUNOWA beyond 2020" Grand Front Osaka, Osaka
- 2021 Workshop "Sanriku Railway Wrapping Project" Kuji, Iwate
- 2024 Musical workshop "The Weird Concert of the Weird Musicians" Life-long Learning Center, Otsu
- Stage director of the Noh play "Noh of Life: MIZUNOWA" Front yard of Nakanoshima Museum of Art, Osaka

**Residency Program**

- 1998 Stayed and worked in Dusseldorf, Germany through "ART-EX" artist exchange program sponsored by Osaka Prefecture

\* \* \* \* \*

For further information or for artwork images please contact us:

- Phone: **+81-90-9015-6087**
- Email: **info@hrdfineart.com**
- Website: **www.hrdfineart.com**

