

FOR IMMEDIATE RELEASE

Interface

Venue: HRD Fine Art
(494-1 Kamigoryo-tatemachi, Kamigyo-ku, Kyoto)
Date: February 11 - March 4, 2023
Hours: **Thu: 11:00am - 3:00pm**
Fri & Sat / September 23: 11:00am - 7:00pm
Closed: Sun-Wed (available for viewing by appointment)

* * * * *

HRD Fine Art is pleased to announce a group exhibition of five artists from Korea and Japan, titled “Interface,” on view from February 11th through March 4th. This show is co-curated by HRD Fine Art and Soojong Jang, and is positioned as a sequel to “Framework,” a group show held in February 2020, exhibiting artworks by three Korean artists (Hyungwan Kim, Joonhyung Lee, Soojong Jang) and two Japanese artists (Ayako Kurihara, Asahi Sugai).

“Interface” is a word to represent something that connects or put together two different things, worlds, or systems. In the modern, borderless world, interface can take diverse forms. Interface can bring about fruitful interaction, or it can end up in harmful friction. And, in the form of art festivals and local art events, people often expect art to function as some sort of social interface.

In this exhibition, five artists from Korea and Japan create and present various “interfaces” through their artworks: interface between two different nations/cultures; interface between artworks (artists) and society (audience); and interface in the contactless age of COVID-19. We hope that the show provides an opportunity for the viewers to re-examine the meaning and significance of “interface” in our life.

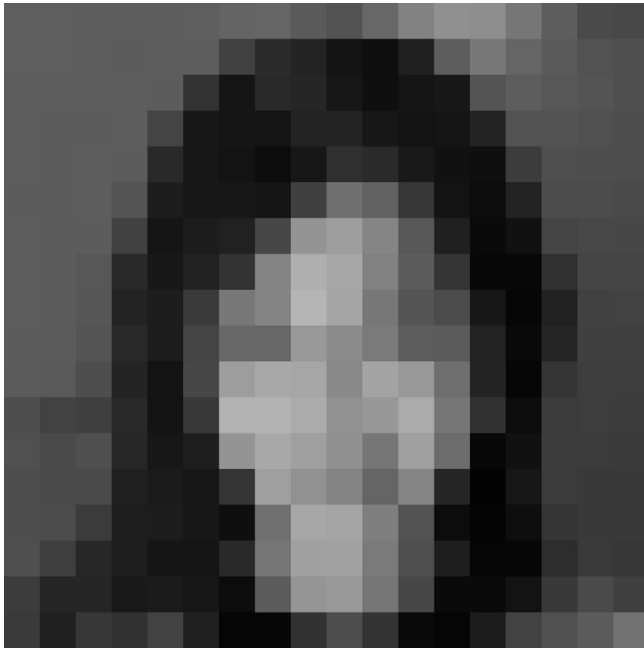
[ARTWORKS]



Hyungwan Kim *Untitled 2*
carbon paper drawing on paper 32x24cm 2005



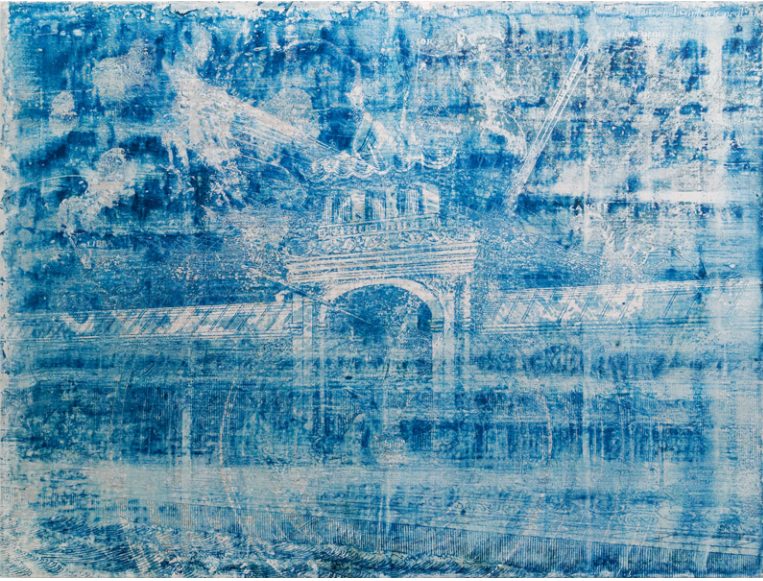
Joonhyung Lee *untitled*
oil on cardboard 45x34x2.5cm 2022



Soojong Jang *reflection of 12th (from Shadow Mirror series)*
mixed media on paper 60x60cm 2023



Ayako Kurihara *Landscape in a Grid - Honmoku Pier*
acrylic, Polaroid film 8.8x10.8cm 2023



Asahi Sugai *de cometis 1698*

cyanotype, acrylic gel medium, silver leaf on panel 36x48cm 2022

[ARTIST'S BIOGRAPHY]

Hyungwan KIM

- 1970 Born in Seoul
 1995 BFA in Paintings, Visual Arts Department of Seoul National University, Seoul
 1998 MFA in Paintings, Graduate School of Seoul National University, Seoul
 2006 MFA in Fine Arts, Goldsmiths College, London
 Lives and works in Seoul

Selected Solo Exhibitions

- 1996 *Drawings and Photographs*, Yoon Gallery, Seoul
 2004 *Void of Representation*, Hanjun Plaza Gallery, Seoul
 2007 *Long Slow Distance*, Toilet Gallery, London
Long Slow Distance, Soso Gallery, Paju
FOUR PAINTINGS, sadi Window Gallery, Seoul
 2008 *Long Slow Distance*, Gallery Noon, Seoul
Long Slow Distance, Korea Art Center, Busan
 2009 *Afterglow*, Gallery Soso, Paju
 2010 *Long Slow Distance*, Vit Gallery, Seoul
Long Slow Distance, Gallery Bora, Seoul
 2012 *LIGHTHOUSE*, Gallery Soso, Paju
 2014 *LINEHOUSE*, UNC Gallery, Seoul
 2015 *WINDOWS*, Gallery Royal, Seoul
 2017 *BRUSH PAST*, Tong-in Auction Gallery, Seoul

Selected Group Exhibitions

- 1998 *Young Korean Artists 98*, National Museum of Contemporary Art, Kwachun
The Retina and the Sense of Touch, DongA Gallery, Seoul
 1999 *21C New Frontier*, Samsung Plaza Gallery, Sungnam
Korean Contemporary Art-Trends in the 90s, Ellen Kim Murphy Gallery, Seoul
 2002 *Inter Project-Symbiosis*, Incheon Culture Center, Incheon
Private Narratives, Busan Metropolitan Museum of Contemporary Art, Busan
 2004 *Still-Life*, Ilmin Museum of Art, Seoul
 2006 *Degree Show*, Goldsmith College, London
Zenith 06, Nomoregrey Gallery, London
George Polke Invites, George Polke Gallery, London
Still Dynamics, Jerwood Space Gallery, London
Nocturnal, Sarah Myerscough Gallery, London
 2009 *Artist Gallery - Fleeting*, SNU Museum, Seoul
Drawing of the world, world of drawing, SNU Museum, Seoul
Emotional Landscape, Pochun Art Valley, Pochun

2012 *Tagging Art Works*, Gyeonggi Museum of Modern Art, Ansan
2020 *Framework*, HRD Fine Art, Kyoto

Public Collections

Busan Metropolitan Museum of Contemporary Art, Busan

Gyeonggi Museum of Modern Art, Ansan

National Museum of Contemporary Art, Kwachon

Joonhyung LEE

- 1976 Born in Seoul
 2002 BA in Fine Art, Seoul National University, Seoul
 2006 MA in Fine Art, University of the Arts London, Central Saint Martins), London
 2016 DFA in Fine Art, Seoul National University, Seoul

Lives and works in Seoul

Selected Solo Exhibitions

- 2002 *There is no sun*, Gallery La Mer, Seoul
 2004 *Dog Project*, Enprini Avenue, Seoul
 2009 *Chapter 11*, Corner Gallery, Seoul
 2010 *MADE IN HEAVEN*, Space of Art, etc, Seoul
 2011 *Joon Hyung Lee Show*, Woosuck Hall, Seoul National University, Seoul
 2012 *Joon Hyung Lee Show*, Eugean Gallery, Seoul
 2013 *It is that*, Space of Art etc, Seoul
 2014 *Brave New World*, Void gallery, Seoul
 2015 *Out of Frame*, Space onewall, Seoul
 2016 *Out of Frame*, space xx, Seoul
 2017 *Out of Frame*, Gallery 644, Seoul
 2018 *Brave New World*, Art Delight, Seoul

Selected Group Exhibitions

- 2006 *Still Dynamics*, Jerwood Space, London
Quick and Dirty, Barge House, London
 2008 *In my shoes*, Gallery Factory, Seoul
HyoHyo no Hyo, Consulate General of Republic of Korea, Osaka
 2011 *Color ball*, powerless gallery, Seoul
face+face+face, Space of Art etc, Seoul
Fantasy, HanJeon Art Gallery, Seoul
 2012 *Two person's show*, Eugean Gallery, Seoul
Portrait, O-Jaemi Dong Gallery, Seoul
 2013 *35th JOONANG Fine Art Prize*, Seoul Arts Centre, Seoul
The Public's Extended, Culture Station Seoul 284, Seoul
 2015 *mindful mindless*, Seoul Olympic Museum of Art, Seoul
 2018 *Art and Labor*, Seoul National University Museum of Art, Seoul
 2019 *LIES*, Seoul National University Museum of Art, Seoul
 2020 *Framework*, HRD Fine Art, Kyoto

Awards

- 2010 International Snow Sculpting Competition Japan Cup in Nayoro (2nd Prize), Nayoro

- 2012 SeMA Selected Emerging Artist, Seoul Museum of Art, Seoul
- 2013 35th JoonAng Fine Art Prize, Seoul

Residency Programs

- 2012 Artist Registry Program, SOMA Museum of Art Drawing Center, Seoul

Soojong JANG

1976 Born in Seoul
2005 BA in Fine Art, Surrey Institute of Art and Design, Farnham, UK
2014 MFA in Media Art, Graduate School of Media Communication, Yonsei University, Seoul
Lives and works in Seoul

Selected Solo Exhibitions

2016 *Zero Point*, Dari Gallery, Jeju
2017 *Escape*, Art Busan, Busan
2018 *Shadow Mirror*, Union Art Fair, Seoul
2019 *Spatial Inquiries - Dialogue*, Selo Arts Space, Seoul

Selected Group Exhibitions

2012 *Void*, Selo Arts Space, Seoul
2013 *Heritage 600 Tomorrow 600*, Goyang Aramnuri Museum, Goyang
2016 *Non Place*, Gallery Toast, Seoul
2018 *Prompt*, Selo Arts Space, Seoul
2019 *Mirage*, Instant Garden, Seoul
Aporia, Space Ba, Seoul
4482, Selo Arts Space, Seoul
Dialogue, Selo Arts Space, Seoul
Exchange, Corner Gallery, Seoul
2020 *Framework*, HRD Fine Art, Kyoto

Grants

2002 Summer Portfolio Grant, Academy of Art College, San Francisco

Ayako KURIHARA

1974 Born in Yokohama
 1999 BFA in Oil Painting, Aichi Prefectural University of Fine Arts and Music
 Lives and works in Yokohama

Selected Solo Exhibitions

2006 *Mind Games*, BankART Studio NYK, Yokohama
 2007 *New Map*, BankART Studio NYK, Yokohama
Untitled / Ayako Kurihara, Gallery Maki, Tokyo
 2009 *fiction/error*, Gallery Maki, Tokyo
 2010 *Pictures*, Edwin R. Molenaar Atelier, Yokohama
 2011 *Conversation with Mr. H*, Demado Contemporary Art Project, Kyoto
 2013 *Conversation with the Vacant Hotel*, Vacant Hotel, Seoul
 2015 *Mind Games*, HRD Fine Art, Kyoto
 2020 *I Am Here, There and Everywhere: Mind Games 2020*, HRD Fine Art, Kyoto

Selected Group Exhibitions

1997 *Battadofu - Rolling Library*, Nagoya City Midori Library, Nagoya
 2007 *CET07 - Central East Tokyo 07*, Taigaku Bldg., Tokyo
Light Room vol.4 - Yamate No.111 Library Exhibition, Yamate No.111, Yokohama
 2008 *Self Portrait*, Gallery Sakamaki, Tokyo
Blue Dot Asia, Seoul Arts Center, Seoul
Food and Contemporary Art part 4 (Yokohama Geijutsu Noren-gai), BankART 1929 Yokohama / Iseya, Yokohama
 2012 *Building a Castle of Sand (or Breaking It)*, Next Door Gallery, Seoul
 2013 *Heritage 600 = Tomorrow 600*, Aram Museum, Goyang, Korea
the Line _ Art, Open the Way for Reunification, Imjingak / Pyeongho-Nuri Park, Paju, Korea
 2015 *Asuka Art Village*, Asuka Historical National Government Park, Asuka-mura, Nara
Asuka Hikari-no-kairou, Asuka-mura, Nara
 2016 *Koganecho Bazaar 2016*, Koganecho, Yokohama
Masters of Asuka, Nara Prefecture Complex of Man'yo Culture, Asuka-mura, Nara
 2017 *Koganecho AIR2017*, Koganecho, Yokohama
 2018 *Koganecho AIR2017 Conclusion Exhibition*, Koganecho, Yokohama
The Game Must Go On: Ayako Kurihara + Yeom Sojin, HRD Fine Art, Kyoto
Koganecho Bazaar 2018 Special Program - pass by: passing and remaining, Koganecho, Yokohama
 2020 *Unmanned Station Art Festival, Oigawa*, Oigawa Railway wayside area, Shizuoka

Residency Programs, Public Performance, Open Studio, etc.

2007 Open Studio *Atelier Gake + Kotori Cafe*, Atelier Gake, Yokosuka
 2007-08 Public Performance *Ayako Kurihara Project Room*, BankART Studio NYK, Yokohama

- 2008 Open Studio *Atelier Gake + Kotori Cafe + Oto*, Atelier Gake, Yokosuka
- 2009 Public Performance *Mind Games 2009 in Sakuraso*, BankART Sakuraro, Yokohama
- 2010 Public Performance *Mind Games 2010*, BankART Studio NYK, Yokohama
- 2013 Open Studio *Open Studio 2013*, BankART Studio NYK, Yokohama
- 2015 Artist-in-residence *Asuka Art Village*, Asuka-mura, Nara
- 2016-17 Artist-in-residence *Koganecho AIR*, Koganecho, Yokohama

Asahi SUGAI

- 1990 Born in Hyogo, Japan
2017 Visiting student, School of the Museum of Fine Arts at Tufts University, Boston
2016 Ph.D in Art, Aichi University of the Arts, Aichi
Lives and works in Aichi, Japan

Selected Solo Exhibitions

- 2017 *e.g.g.o 0059 Asahi Sugai*, Taigado, Kyoto
2019 *past yet to come, future gone away, and present vaguely visible*, Gallery Valeur, Nagoya
2022 *de cometis*, L gallery, Nagoya

Selected Group Exhibitions

- 2014 *Cubic Museum*, Silpakorn University Art Gallery, Bangkok
Parallel Hexagon, Gallery Kusabue, Nagoya
Japan-Thailand Art Student Exhibition, Chiang Mai University Art Center, Chiang Mai
2016 *Paintings as Materials*, Gallery Senbyakudo, Tokyo
The Sea Coming Into Sight, Dohjidai Gallery of Art, Kyoto
Gizai-hentai-ten, Satellite Gallery of Aichi University of the Arts, Nagoya
2017 *Bidai-sei-ten*, Sezon Art Gallery, Tokyo
Arts in Bunkacho, Agency for Cultural Affairs Government of Japan, Tokyo
Kissing the Wall, School of the Museum of Fine Arts at Tufts University, Boston
The Drawn World, School of the Museum of Fine Arts at Tufts University, Boston
2020 *Framework*, HRD Fine Art, Kyoto
2021 *Lights Gallery*, Nagoya

Awards / Grants / Scholarships

- 2015 The 30th Holbein Scholarship Grant, Osaka
2016 Horita Scholarship Foundation, Osaka
Art Award, The Hori Sciences and Arts Foundation, Nagoya
2017 The 34th Research Grant, The Nitto Foundation, Nagoya

Residency Programs

- 2014 Silpakorn University, Bangkok
2019 AGA LAB, Amsterdam

[NEW CORONAVIRUS COUNTERMEASURES]

HRD Fine Art implements the following countermeasures to prevent the spread of the new coronavirus as we restart our exhibition program at the gallery.

i. Suspension of opening receptions

Previously, we used to host opening reception parties for our exhibitions held in the gallery to facilitate communication between the artists and the audience. However, to ensure safety of the visitors, we will suspend opening receptions for the time being.

ii. Body temperature measurement, facemasks, and hand disinfection

We kindly ask all visitors to measure their body temperature prior to their visit (on the same day). In some cases we might kindly request to measure the guest's body temperature using non-contact thermometer. Anyone with the body temperature at 37.5°C or higher, or anyone with respiratory symptoms such as coughing, will not be permitted entry to the gallery. All visitors are kindly requested to wear an unwoven mask or equivalent or a higher-level respirator at all time during their visit. Cloth masks, urethane masks, and gauze masks are not permitted, and those with such masks are requested to wear unwoven masks provided by the gallery. Please contact us beforehand if you cannot wear an unwoven mask due to any specific health condition. Visitors shall disinfect their hands before they enter the gallery using alcohol-based hand sanitizer provided by the gallery.

iii. Limited number of people allowed in the gallery at once

In order to avoid congestion, we might ask visitors to wait outside the building until other visitors already in the gallery finish viewing the exhibition and leave.

iv. Possibility of temporary closure of the gallery or shift to appointment-only system

As a result of close monitoring of the pandemic situation and in order to safeguard all people involved in a more secure manner, HRD Fine Art might temporarily close its door and suspend the exhibition program altogether, or introduce an appointment-only system without prior notice or on short notice. We will make sure to notify such changes as swiftly as possible through channels that include our website (www.hrdfineart.com) and social media.

Thank you for your kind understanding and cooperation!

* * * * *

For further information or for artwork images please contact us:

- Phone: +81-90-9015-6087
- Email: info@hrdfineart.com
- Website: www.hrdfineart.com

